

Youlbury Residential Parent meeting



The basics..

- This PowerPoint will be uploaded to the class page – let other parents know.
- Wednesday 8th May – Friday 10th May 2024
- Leave during the morning on Wednesday and return in time for the end of the school day on Friday.
- Staffing: Mrs Doran, Mr Gale, Mr Murton and Mrs Hanger

What should I bring?

- Kit lists will be emailed tomorrow
- Packed lunch for Day 1 - disposable
- Bedding: sleeping bag and pillow
- DO NOT spend lots of money on new clothes!
- No mobile phones / electronic items
- Disposable cameras optional – photos will be uploaded to website

Time to get busy!

- Typical activities include:
 - Abseiling
 - Camp fires
 - Crate stacking
 - Team building
 - *We will keep the exact timetable a surprise until we get there*
- We encourage children to develop a range of skills: independence, resilience, team building... Challenge ourselves to be the best we can.
- Split in to 3 groups for activities, but lots of time available to see other friends throughout the day
- Photos will be shared on website (dependent on Internet access)

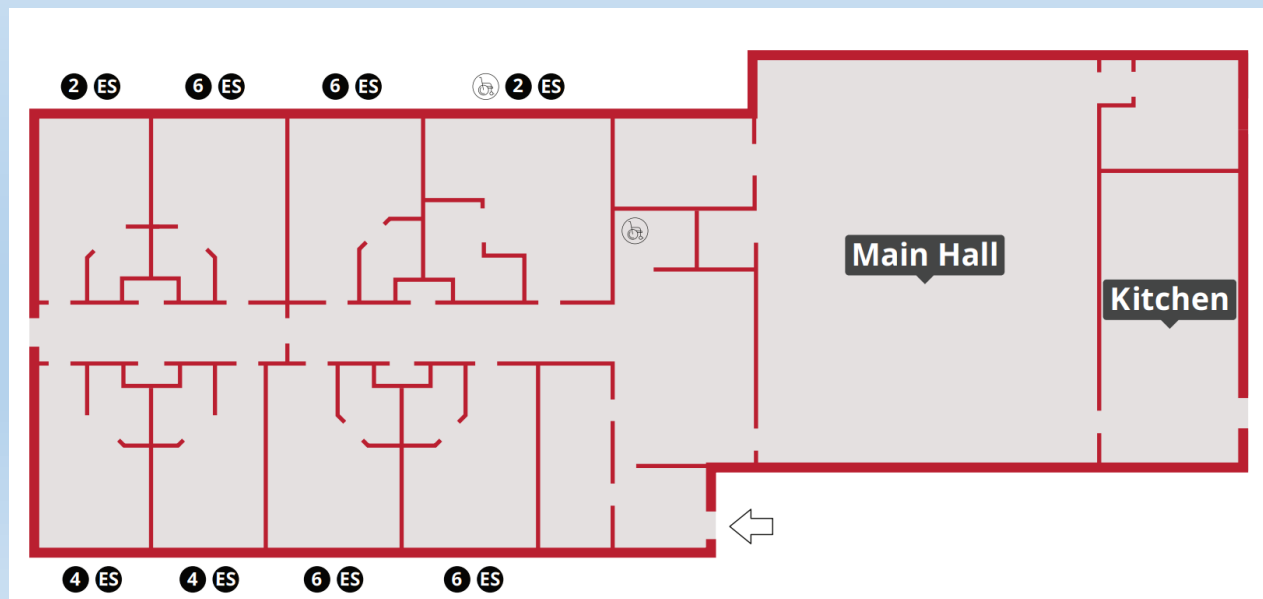
Time to eat...

- Information forms will allow you to provide dietary information for your child.
- Meals usually at 8am, 12.30pm, 5.15pm.
- Sample menu

	Breakfast	Lunch	Dinner
Mon			Chilli night Mild Mexican beef mince chilli Mild mixed bean chilli Served with rice, sweetcorn, cheddar cheese and tortilla chips Lemon loaf cake
Tue	Pancakes with maple syrup and fruit compote Porridge pots Fresh fruit selection Toast with spreads Choice of cereals	Fish finger sandwich Quorn fishless finger sandwich Choice of crisps Fresh fruit selection Sweet treat or snack	Pasta station Penne pasta with cheesy chicken and sweetcorn Penne pasta with tomato sauce Served with cucumber sticks, cheddar cheese and garlic bread Baked cheesecake
Wed	Sausage breakfast roll Vegetarian sausage breakfast roll Porridge pots Fresh fruit selection Toast with spreads Choice of cereals	'Build your own' sandwich bar Choice of crisps Fresh fruit selection Sweet treat or snack	Burger night Chicken burger in a brioche bun Bean burger in a brioche bun Served with ketchup, mayonnaise, coleslaw and potato wedges Chocolate fudge cake
Thu	Pancakes with maple syrup and fruit compote Porridge pots Fresh fruit selection Toast with spreads Choice of cereals	Fish finger sandwich Quorn fishless finger sandwich Choice of crisps Fresh fruit selection Sweet treat or snack	Jacket potato station Tuna mayonnaise jacket potato Baked beans and cheddar cheese jacket potato Served with cucumber sticks Lemon loaf cake
Fri	Sausage breakfast roll Vegetarian sausage breakfast roll Porridge pots Fresh fruit selection Toast with spreads Choice of cereals	'Build your own' sandwich bar Choice of crisps Fresh fruit selection Sweet treat or snack	

Time for bed...

- Between 4 and 6 children in a room with an en-suite.
- Children will be asked to write down the names of approximately 5 children they would like to share a room with. We will try our best to accommodate this.
- Children will be informed about who they will share a room with on arrival.
- Children can bring teddies!! 😊
- Midnight feasts...



Return

- We will return to school during the Friday afternoon.
- Please be prompt to collect your child at 3.15pm!! 😊
- Worries?
 - Rehearse with a sleepover
 - Get your child involved with packing their own bags
 - Visit the website
 - Social story / residential guide sent home
 - We will contact you if we have ANY worries!
 - Keep it in proportion!
- Any questions?